

# MRF of the Month

## Emterra Environmental Regina Single Stream Recyclables Material Recovery Facility

Regina, the capital of Saskatchewan, is located in the heart of the windswept plains of western Canada. The Queen City, as it's known, is also home to the Emterra Environmental Regina Single Stream Recyclables Material Recovery Facility.

Emterra designed the 50,000-square-foot MRF with LEED standards in mind, using 275 tons of recycled asphalt and 150 tons of recycled steel in its manufacture. The building also features other environmentally friendly design elements, such as dual-glazed windows for increased insulation

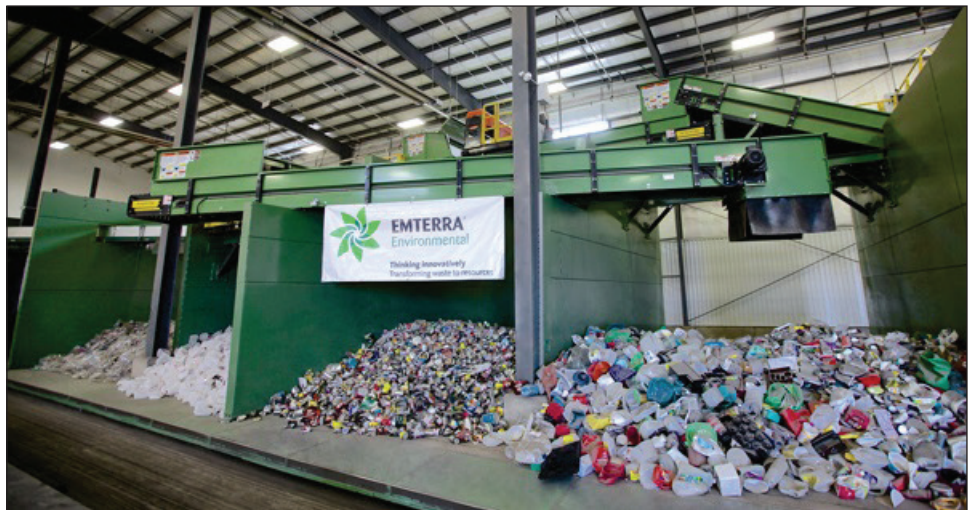


against the cold Canadian winters, use of natural lighting for daytime-operating hours and even bathrooms that are equipped with low-flow flushing systems to save water.

The \$18 million, state-of-the-art facility has the ability to process over 55,000 tons of recyclables annually, using equipment from VAN DYK Recycling Solutions, TITECH optical sortation devices and Bollegraaf Recycling Solutions equipment.

According to Emterra, that equipment, with its multiple optical sorters, sizing screens and mechanical sorting equipment enables the company to process the full spectrum of packaging and printed paper recyclables collected from the residential and ICI (industrial, commercial and institutional) sectors, including Nos. 1-7 plastic packaging, aseptic and polycoat containers, steel cans, aluminum containers, glass, cardboard, newspaper, magazines, soft cover books, printer paper and all types of mixed paper. The material mix at the facility is approximately 70 percent fiber and 30 percent commingled containers.

The MRF receives materials from the City of Regina's single-stream curbside recycling program, which serves approximately 60,000 households, though the company also provides recyclables collection and processing – as well as commodity marketing services – to several other communities in Saskatchewan. In addition, Emterra provides services to



## Technical Specifications

### Emterra Environmental Regina Single Stream Recyclables Material Recovery Facility

#### Location:

Regina, Saskatchewan

#### Start-up date:

July 2013

#### Number of processing lines:

One

#### Throughput:

55,000 tons annually

#### Tons of material processed in its first operating year:

12,600

#### Residue rate:

Approximately 10-15 percent



multifamily buildings and the business community.

"Contamination is always a concern," notes Paulina Leung, vice president of corporate strategy and business development for Emterra, echoing a common MRF operator sentiment. "Within our facility, we have implemented strict measures so that all employees are able to conduct their roles safely, and recyclables are effectively processed. We receive an array of materials that can contaminate the process, including plastic bags, tires, hoses, electronics, organic materials, trash, textiles and household appliances."

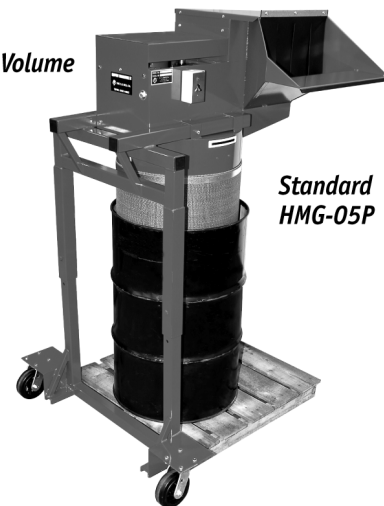
In partnership with the Saskatchewan Abilities Council, Emterra provides both full and part-time employment opportunities to people with varying abilities at the new MRF. These opportunities are part of the Partners in Employment Program, which is provided by the Saskatchewan Abilities Council.



## Glass Crushers

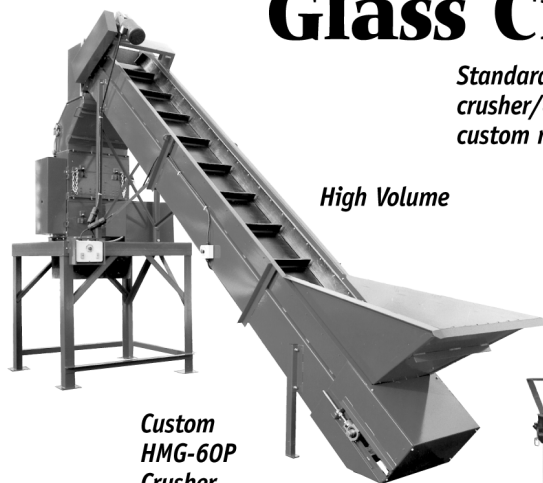
*Standard Units, combination type crusher/conveyor, modified and custom manufactured.*

*Low Volume*



**Standard  
HMG-05P**

*High Volume*



**Custom  
HMG-60P  
Crusher**

## Conveyors

*Custom sizes, horizontal, sorting, magnetic, inclined, material handling*



**Custom  
36 in. x 50 ft.  
sorting conveyor**

*Visit our website for  
aluminum can handling,  
other crushers  
and equipment*



**C.S. BELL CO.**

P.O. Box 291 • Tiffin, OH 44883 • 888-958-6381 • 419-448-1203 fax  
<http://www.csbellco.com> • e-mail: [sales@csbellco.com](mailto:sales@csbellco.com)