

# MRF of the Month

## Republic Services Conover

Conover, North Carolina is nestled in the Western Piedmont area of North Carolina, originally settled at a “Y” intersection of the railroad crossing the Tar Heel State. Originally called “Wye Town,” Conover is located close to other major cities in North Carolina (50 miles northwest of Charlotte; 60 miles west of Winston-Salem; and 80 miles east of Asheville) – a kind of intersection for much of the state, much as how the brand new Republic Services Conover, North Carolina materials recovery facility is at the intersection of recyclable materials for the region.

Also going by its legal name of GDS Recycling Services/GDS Conover Transfer Station, the MRF originally opened in 1990 and ran until November 2013, when Republic Services decided to revamp the facility from the ground up.

“All the equipment was removed, original pits filled and construction began to retrofit the facility into today’s recycling market,” said a representative from Republic Services. “The



building was modified and all-new processing equipment was installed.”

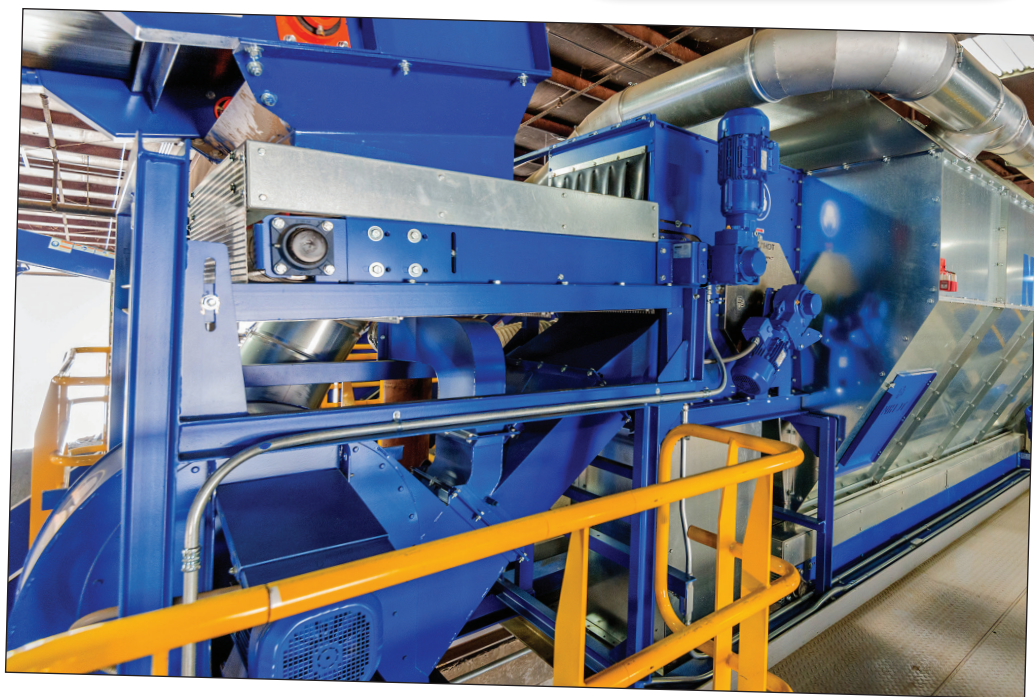
That state-of-the-art equipment was designed and installed by Bulk Handling Systems (BHS) into the 49,000-square-foot MRF, which will hold its public grand opening on June 5.

The facility serves an area including almost 150,000 households throughout western

North Carolina, including the city of Hickory and nearby Carawaba, Guilford, Montgomery, Richmond and Stanly counties. Commodities are processed commingled but, depending on the source, the material is collected via a single- and dual-stream approach. The company is in the process of converting the other programs that it hauls to single-stream. The MRF also services commercial customers, offering “front-load cardboard, open tops, compactors, trailers, carts and Gaylord services for recycling,” according to the company.

The facility has a current throughput of 25 tons per hour – 200 tons per day – and Republic expects to process 45,000 tons in 2014. The MRF handled just over 31,000 tons in 2013, even with a six-week shutdown, preparing for the rebuild.

The material mix handled by the facility is 83 percent fiber and 17 percent containers with a roughly 7 percent residue rate. “Since we



## Technical Specifications

### Republic Services Conover

#### Location:

Conover, North Carolina

#### Start-up date:

1990, grand re-opening June 2014

#### Number of processing lines:

One

#### Throughput:

25 tons per hour

#### Tons of material expected to be processed in 2014:

45,000

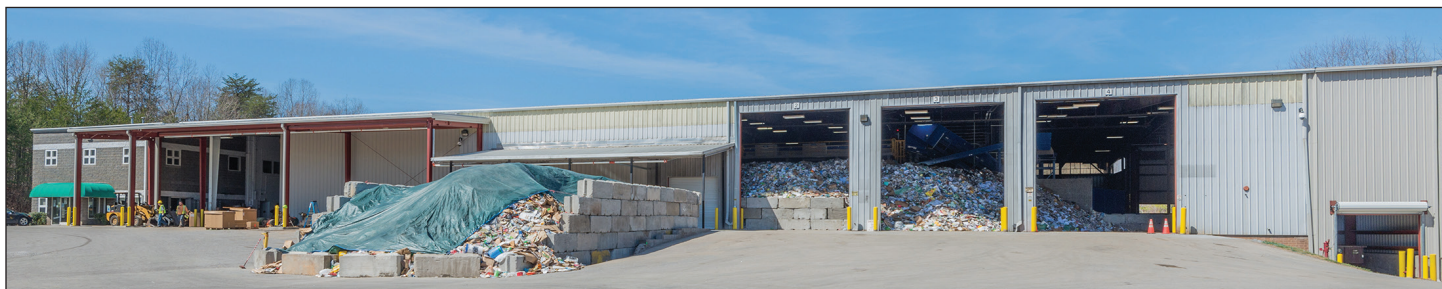
#### Residue rate:

6.7-7.1 percent

have started running we have averaged 98 percent run-time,” said to a Republic representative.

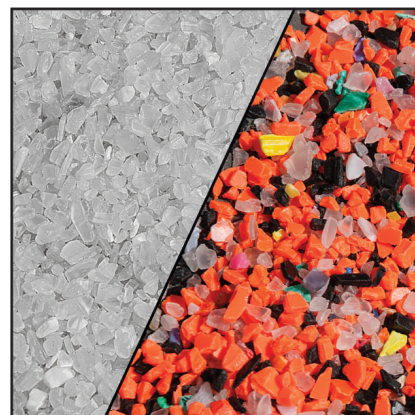
Also, the MRF is using a new method for glass clean-up, employing the Nihot single-drum separator. The system uses BHS’ impact discs and roll-screens in combination, removing glass from the line at the outset. Glass and fines are then sent to the Nihot separator, which uses air technology to remove the fiber from glass, creating a “very clean glass/heavy product,” according to the company.

The Republic Services Conover, North Carolina MRF has 43 employees running one shift, five days a week.



## SORTING SOLUTIONS FOR THE RECYCLING INDUSTRY

■ Color Recognition ■ Polymer Identification ■ Metal Detection



The **VARISORT** combines three sensors to provide the ultimate in sorting flexibility

■ PET Flake ■ PP/PE Flake ■ Electronic Waste ■ Mixed Plastics

S+S Inspection Inc. • 1234 Hardt Circle Bartlett IL 60103 • Tel. 224.208.1900 • info@sesotec.us • www.sesotec.us

Reader service #120