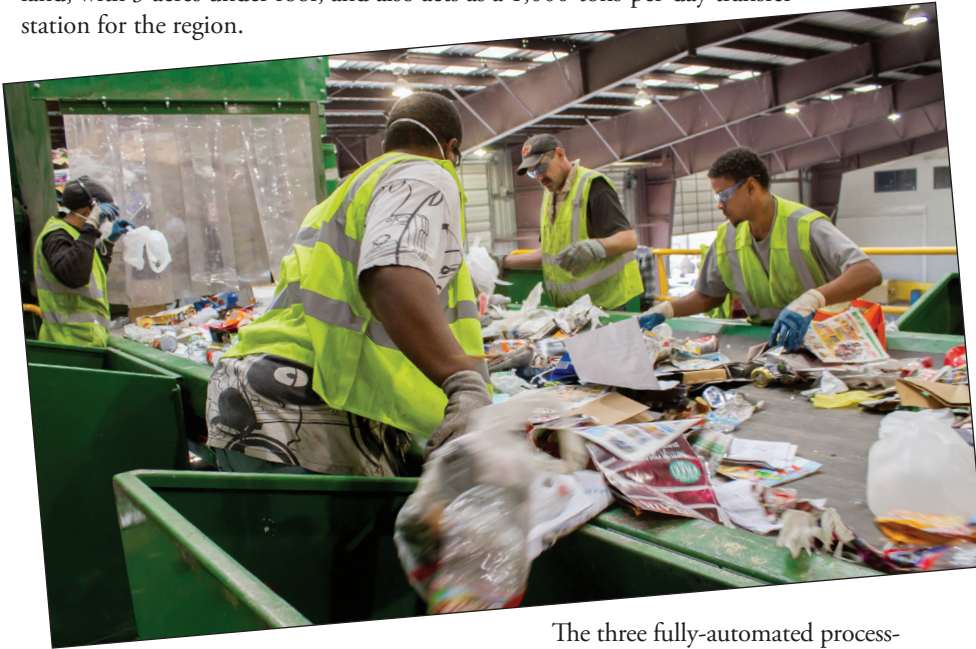


MRF of the Month

Tulsa Recycle and Transfer, Inc.

Known as the birthplace of Route 66, Tulsa, Oklahoma can get its kicks out on that iconic highway and its recyclables processed at its newly completed materials recovery facility. The Tulsa Recycle and Transfer Materials Recovery Facility – also known as Mr. Murph – recently had a ribbon-cutting ceremony for its reopening following a \$10 million upgrade.

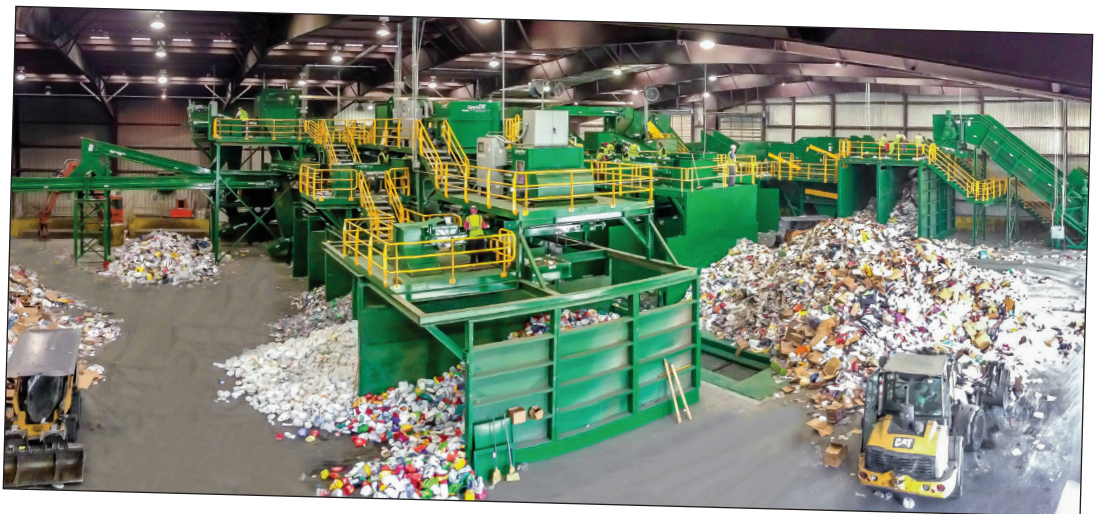
Owned and operated by American Waste Control, the 117,000-square-foot MRF has three processing lines: single-stream, a hybrid, or dirty, line and one processing line that manages construction and demolition debris. The facility sits on an 8 acre plot of land, with 3 acres under roof, and also acts as a 1,000-tons-per-day transfer station for the region.



The three fully-automated processing lines were designed and manufactured by Bulk Handling Systems, which included a container line magnet, an eddy current separator, a glass clean-up system, and screens for separating out OCC, newsprint and other materials. NRT provided optical units for plastics and Marathon Equipment Company provided balers and the installation.

The MRF accepts material from a variety of collection methods. First, American Waste Control collects single-stream recyclable materials from both commercial establishments and approximately 120,000 single-family residences throughout Tulsa, as part of a 10-year contract the company signed with the city in October 2012. Mr. Murph is also fed via a one-cart system from Jenks, a Tulsa suburb, as well as some commercial customers, with bagged trash and loose recyclable materials in same container. The MRF also accepts materials from approximately 100 drop-off sites located around Tulsa.

The single-stream line has a rate of 15 to 20 tons per hour, with a material stream of about 45 percent fiber and the rest commingled containers and glass. The hybrid line does not accept glass and has a material stream of around 60 percent fiber. It is the only licensed hybrid MRF in the state.



Technical Specifications*

Tulsa Recycle and Transfer, Inc.

Location:

Tulsa, Oklahoma

Start-up date:

March 2011

Number of processing lines:

Three

Throughput:

From eight to 20 tons per hour, depending on the line

Tons of material expected to be processed in 2013:

Over 50,000 tons

Residue rate:

Approximately 18 percent on the single-stream line

The facility has the same issues that most MRFs have, with nuisances such as plastic bags and contamination such as clothing, garden hoses and bowling balls. On the single-stream line, the facility has a residue rate of around 18 percent.

Mr. Murph, as the facility is known, is also a cartoon character used in promotional materials, as well as on various collection containers and hauling equipment. The character, featuring a conveyor belt on its back leading recyclables through the processing facility, is also featured in an educational website (www.feedmrmurph.com) and even has a ringtone.

The Tulsa Recycle and Transfer MRF currently has approximately 60 employees working two shifts, six days a week, with plans to run a third shift in the future. Once running all three shifts, the firm expects to process approximately 200 tons of materials per day.

*Know of a North American MRF that you feel *Resource Recycling* readers should know about? If so, e-mail your recommendation, with high-resolution pictures, to dylan@resource-recycling.com, and your facility may just be highlighted in a future “MRF of the Month” column.

