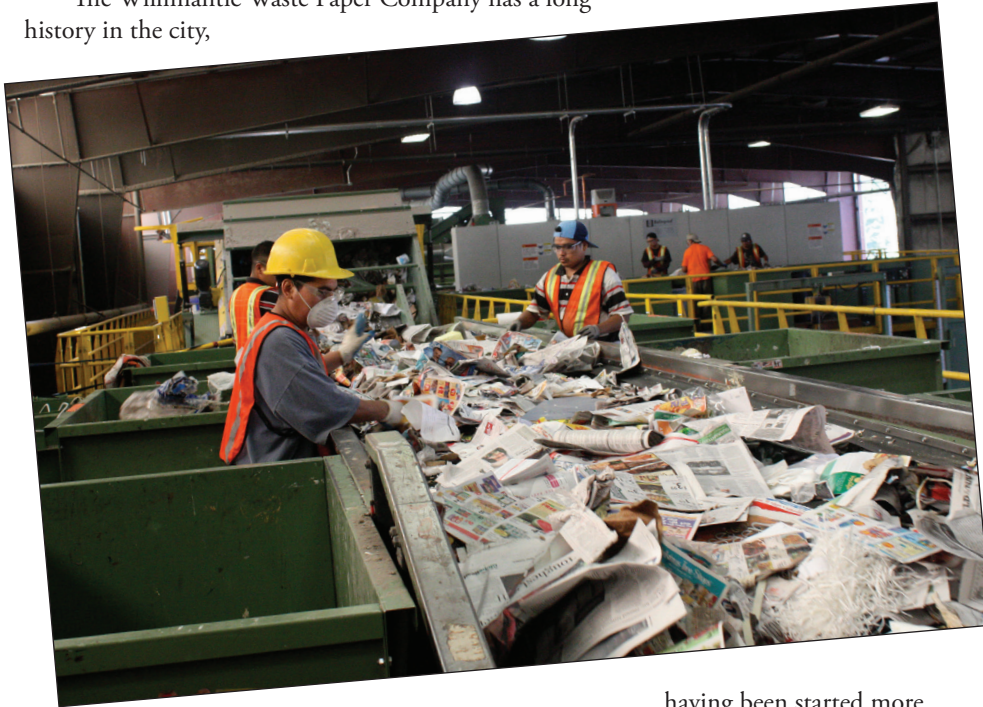


# MRF of the Month

## Willimantic Waste Paper Company Incorporated

Located 30 miles due East of Connecticut's capital city, Hartford, Willimantic was formerly known as "Thread City," as a nod to the city's history, at one time, as one of the largest thread producers in the world. The word Willimantic is an Algonquian term for "land of the swift running water," and while the city's materials recovery facility is not on the river's banks, the MRF does have swift running conveyor belts covered with recyclable materials.

The Willimantic Waste Paper Company has a long history in the city,



having been started more than 75 years ago by Patrick DeVivo. And in the 1940s, the firm recovered metal, rags and paper in the immediate Willimantic, Connecticut area.

Now, the 66,000-square-foot MRF handles single-stream collected commercial and residential recyclables from throughout the region, including the towns of Chaplin, Montville, Putnam, Tolland, Windham and Windsor.

The facility underwent a renovation in 2009, which included a 15,000-square-foot addition to convert the processing system from dual-stream to single-stream. The facility has three main lines – fiber sorting, container recovery lines and metal recovery – which processed over 70,000 tons of recyclables in 2012 and expects to process over 80,000 tons in 2013.

The processing system features a Lubo USA Sorting System, Bollegraph Recycling Machinery and optical sortation by TiTech and has a throughput of approximately 25 tons per hour. The material mix is 55-65



## Technical Specifications\*

Willimantic Waste Paper Company Incorporated

### Location:

Willimantic, Connecticut

### Start-up date:

Renovated in 2009

### Number of processing lines:

Three

### Throughput:

Approximately 25 tons per hour

### Tons of material expected to be processed in 2013:

Over 80,000 tons

### Residue rate:

An average of 7-8 percent

percent fiber and 20-25 percent containers. All of the collection served by the facility – which is delivered by other haulers or by the municipalities themselves – is single-stream.

The MRF has a 7-8 percent residue rate with the biggest issue being the oft-cited plastic bag, which gets caught in the moving parts of the system.

The Willimantic Waste Paper Company MRF has approximately 250 employees who, directly or indirectly, assist with day-to day operations at the facility, which typically runs two shifts, five to six days per week.

\*Know of a North American MRF that you feel Resource Recycling readers should know about? If so, e-mail your recommendation, with high-resolution pictures, to [dylan@resource-recycling.com](mailto:dylan@resource-recycling.com), and your facility may just be highlighted in a future “MRF of the Month” column.

