

# MRF of the Month

## Metropolitan Recycling MRF

Located in the heart of California's breadbasket, Bakersfield is the county seat of Kern County, the fourth largest agricultural producing county in the U.S. and one of the fastest-growing cities in the country, with a population of more than 350,000. Wherever there are that many residents looking to feed the Golden State with the San Joaquin Valley's bounty, there's bound to be an abundance of recyclables to sort as well.



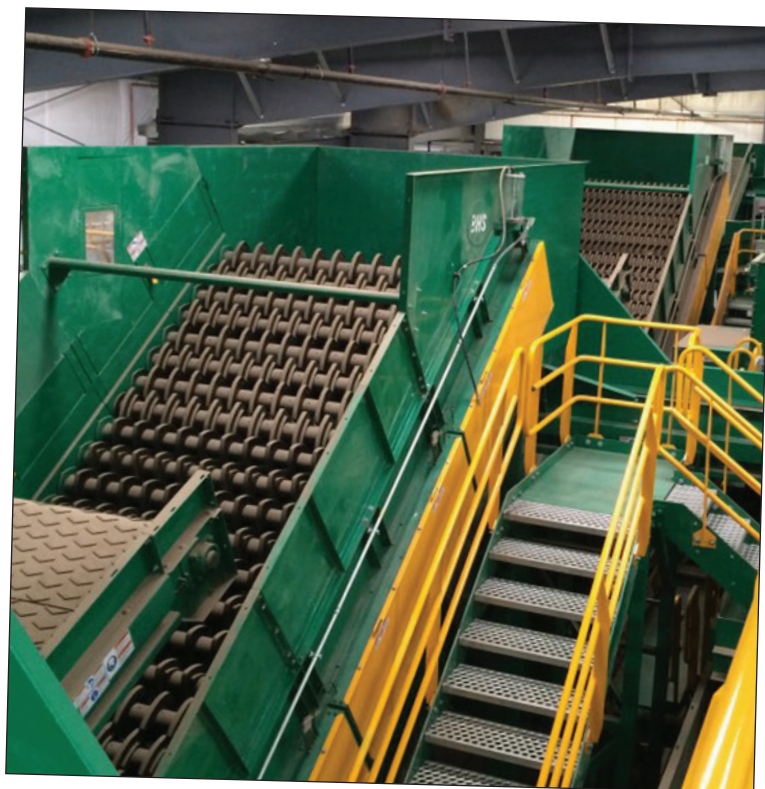
Which is where the Metropolitan Recycling MRF comes in.

The 50,000-square-foot facility, located at the Mount Vernon Recycling Complex, is a cooperative effort of five Kern County hauling companies (Howards Garbage, Price Sanitation, Superior Sanitation, Varner & Son, and Varner Brothers, Inc.), the City of Bakersfield and the County of Kern. The opening of the facility in February 2014 followed a roll-out – with attendant 96-gallon rollcarts – of single-stream collection of recyclables from single-family homes on city and county land.

The MRF also receives single-stream-collected materials from commercial sources. The material mix handled by the facility is approximately 75 percent fiber and 25 percent containers.

The \$8 million state-of-the-art facility was designed, built and installed by Bulk Handling Systems and includes the firm's OCC separator, a debris roll screen, a BHS NewSorter, a polishing screen, a magnet and BHS controls with SCADA. The facility will be able to process more than 30,000 tons of materials in its first year, with one shift.

"We are very proud to bring a state-of-the-art facility to this community," said Jacob Panero of Metropolitan Recycling and Varner Bros, Inc. "This project was developed in collabo-



## Technical Specifications

### Metropolitan Recycling MRF

#### Location:

Bakersfield, California

#### Start-up date:

February 2014 for single-stream

#### Number of processing lines:

Two

#### Throughput:

16 tons per hour

#### Tons of material processed in 2014:

30,000

#### Residue rate:

10 percent





ration with forward-thinking partners from the City of Bakersfield and Kern County. The MRF will sort, bale and ship all of the residential and commercial single-stream material from Bakersfield and much of Kern County for many years to come.”

Needles and sharps are cited as the primary issues vexing the facility, which has an 10 percent residue rate.

“The volume of the material that we’re able to handle [has now grown],” said facility manager Martin Graves in an interview with the *Kern Golden Empire* at the opening of the MRF. “It processes anywhere from 15 to 20 tons per hour, where previously, in hand-sorting from our previous operations, we were about 4 tons an hour max.”

The Metropolitan Recycling MRF has 35 total employees working one shift, five days per week.

## AES is Your Source for Innovative, Economical and Sustainable Recycling Equipment and Systems



AES is the go-to company for innovative products and automated systems for MRF, C&D, Shredding and Size Reduction, Bag Capture, and Dust Control. Our comprehensive product line and Innovative products like the AirShark™ Rotary Material Separator and our exclusive Glass Clean-up System makes AES the logical choice for your next recycling equipment purchase, turnkey project or system upgrade. Used and reconditioned equipment is also available. Contact AES Sales Engineer today for more information.

Recycling and  
Sorting Systems

Balers and  
Compactors



Shredding and  
Size Reduction

Air Classification  
and Dust Filtration

**ADVANCED EQUIPMENT SALES**

800-572-9998 • [www.aesales.net](http://www.aesales.net) • [sales@aesales.net](mailto:sales@aesales.net)