

# MRF of the Month

## Bluewater Recycling Association Materials Recovery Facility

Located two hours north of Detroit, Michigan on an old air force training base in Huron, Ontario, the Bluewater Recycling Association materials recovery facility has been in use for almost two decades.

The Bluewater MRF services approximately 70,000 households from 24 local municipalities in Southwestern Ontario. The rural service area is approximately 3,300 square miles which is about the size of the states of Delaware and Rhode Island combined.

The facility is fed by both commercial and residential single-stream collection, with a mix of roughly 76 percent fiber and 24 percent containers, by weight.

The MRF has an annual throughput capacity of 50,000 metric tons, though it only processed approximately

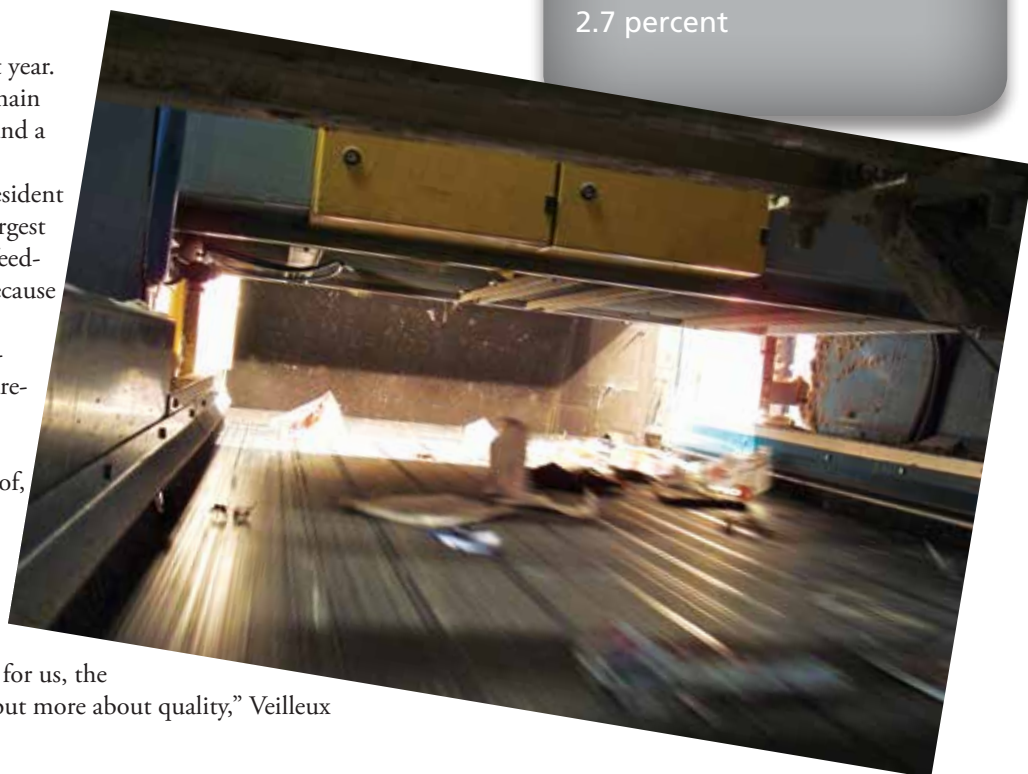


15,000 tons over the past year. The MRF has one processing line with a main sorting line, a plastic quality control line and a baler line.

According to Francis Veilleux, the president of Bluewater Recycling Association, the largest challenge facing the facility is the lack of feed-stock. "We usually shut down at lunch because we run out of materials," says Veilleux.

Machinex Industries designed and installed the equipment for the 43,000-square-foot facility – a "recycled" WWII airplane hangar erected in 1943. While the wood structure has 30 feet of clearance to the roof, the wood beams hang as low as 18 feet in areas, which meant that equipment placement and installation had to be planned very carefully.

"We are a relatively small rural program with limited volume capacity so, for us, the system design was not about throughput but more about quality," Veilleux



### Technical Specifications\*

#### Bluewater Recycling Association Materials Recovery Facility

##### Location:

Huron Park, Ontario

##### Start-up date:

As a dual-stream facility, April 1994. After single-stream upgrade, December 2009

##### Number of processing lines:

One

##### Throughput:

15 metric tons per hour

##### Tons of material processed in 2012:

Approximately 15,000 metric tons

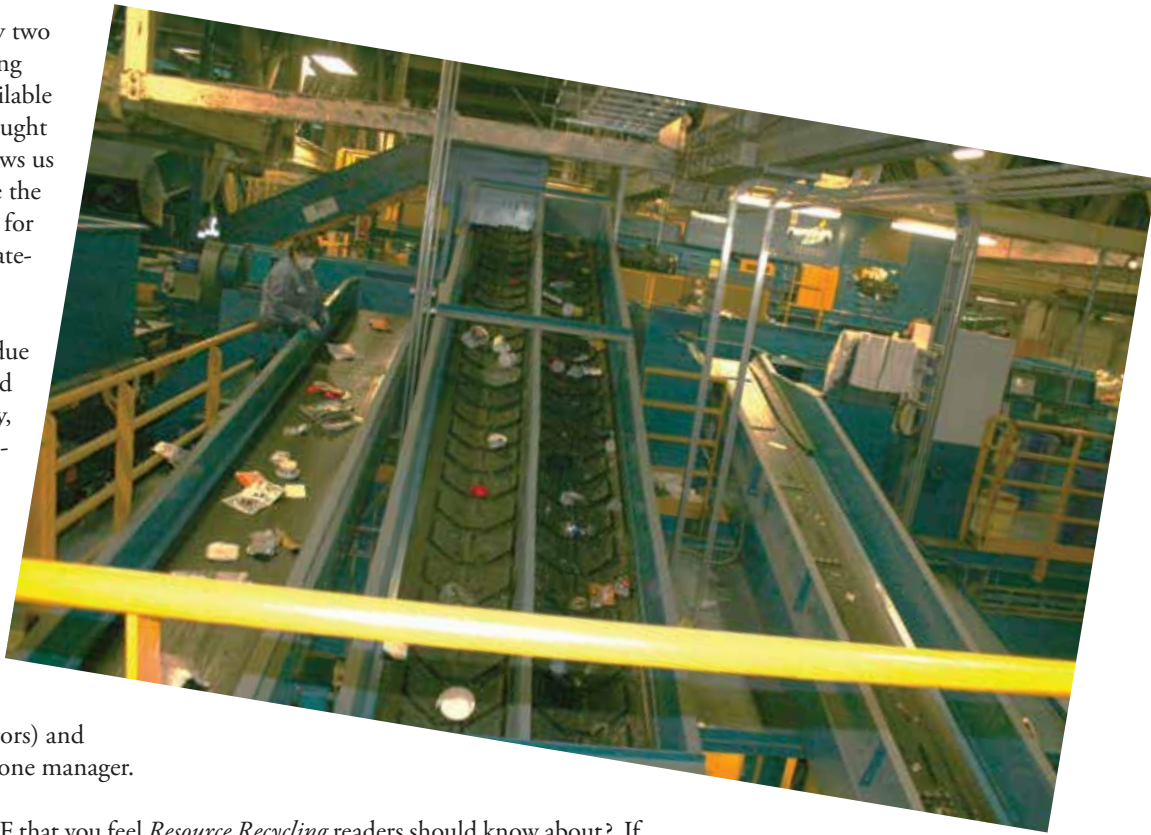
##### Residue rate:

2.7 percent

says. When updating the facility two years ago, the Bluewater Recycling Association “searched all the available technologies at the time and brought together a combination that allows us to use the equipment to separate the materials and reserve our people for actual quality control of each material produced.”

The final result is a single-stream facility with a gaudy residue rate of 2.7 percent. “We doubled the throughput of the old facility, improved the quality of the commodities, reduced residue rates, and virtually eliminated injuries in the facility,” notes Veilleux.

The Bluewater Recycling Association MRF runs one shift, five days per week (Monday-Friday), and employs a dozen material handlers (quality control inspectors) and four equipment operators, with one manager.



\*Know of a North American MRF that you feel *Resource Recycling* readers should know about? If so, e-mail your recommendation, with high-resolution pictures, to [dylan@resource-recycling.com](mailto:dylan@resource-recycling.com), and your facility may just be highlighted in a future “MRF of the Month” column.