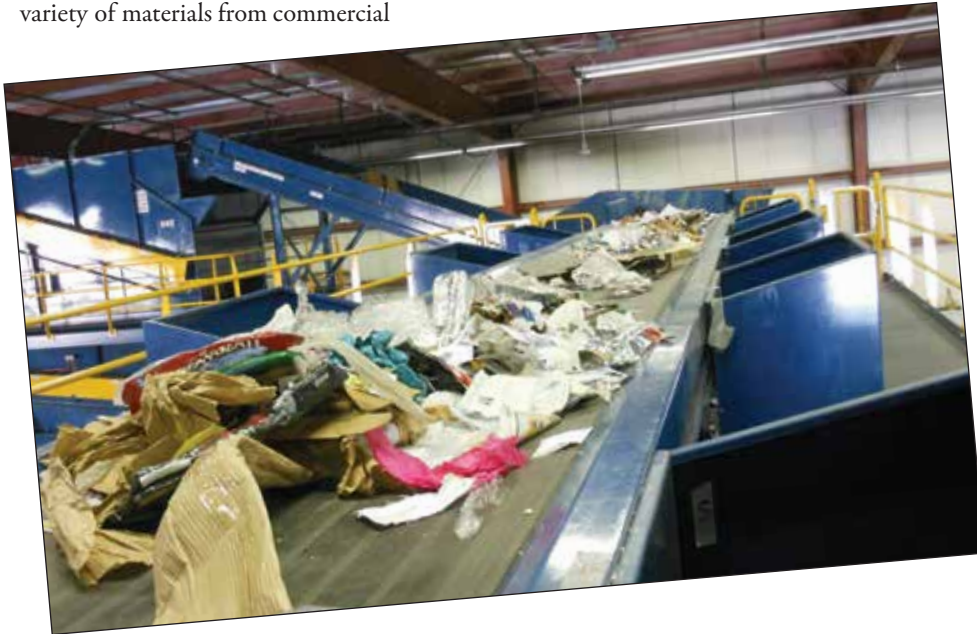


MRF of the Month

Bestway Recycling, Inc.

At the base of the foothills of the Rocky Mountains, in the shadow of mighty Pike's Peak, Colorado Springs, Colorado is also home to the region's newest and largest materials recovery facility. Bestway Recycling's new 50,000-square-foot MRF handles single-stream recyclable materials collected from Colorado Springs and the surrounding communities of Buena Vista, Monument, Palmer Lake, Perry Park, Salida and Woodland Park.

The MRF accepts mixed paper, plastics Nos. 1-7, glass, old corrugated cardboard, aluminum, tin and steel containers. The company also collects the same variety of materials from commercial



establishments throughout the region as well.

The state-of-the-art facility's 15 tons per hour sortation system was designed and built by Eugene, Oregon's Bulk Handling Systems and includes an OCC separator, a debris roll screen, a polishing screen, a magnet, an eddy current separator and pneumatic transfers. Bestway Recycling expects to ship 5,000 tons of sorted recyclable materials in 2012, about 4,100 tons



Technical Specifications*

Bestway Recycling, Inc.

Location:

Colorado Springs, Colorado

Start-up date:

June 18, 2012

Number of processing lines:

One line with three sorting stations

Throughput:

15 tons per hour

Tons of material processed in 2012 (estimated):

5,000 tons

Residue rate:

3-5 percent

of which is fiber and 900 tons is sorted containers.

Before the Bestway Recycling MRF was built, the single-stream recycling collected by the company had to be trucked up to Denver or Boulder – both over an hour north – to be sorted, baled and sold. “It’s 50 or 60 tons a day we’re trucking to Denver,” Tom Kiemel, co-owner of the company with his brother Phil, told the *Colorado Springs Gazette* when the facility opened this past June. “Our main focus with [the new MRF] is to eliminate that transportation.”

The facility’s biggest issues are the ones that plague most MRF’s – plastic bags, wood, pallets, furniture, shredded paper and swing sets.

Bestway Recycling has 10 full-time employees and 16 temporary employees working one shift, five days a week.

*Know of a North American MRF that you feel *Resource Recycling* readers should know about? If so, e-mail your recommendation, with high-resolution pictures, to dylan@resource-recycling.com, and your facility may just be highlighted in a future “MRF of the Month” column.

