

MRF of the Month

ReCommunity Detroit / RRRASOC Materials Recovery Facility

Located in Southfield, Michigan, on the Motor City's north side, there is a materials recovery facility that is fruit of a public-private partnership between ReCommunity and the Resource Recovery and Recycling Authority of Southwest Oakland County (RRRASOC), an intergovernmental, municipal solid waste authority created over two decades ago. The ReCommunity Detroit / RRRASOC Materials Recovery Facility (MRF), originally built in 1994 on the formerly-contaminated site of a dilapidated machine shop, was retrofitted in 2011 with a multi-million dollar makeover and is now the highest-capacity MRF in the Great Lakes State.

The renovation was done to convert the 52,820-square-foot facility to accept



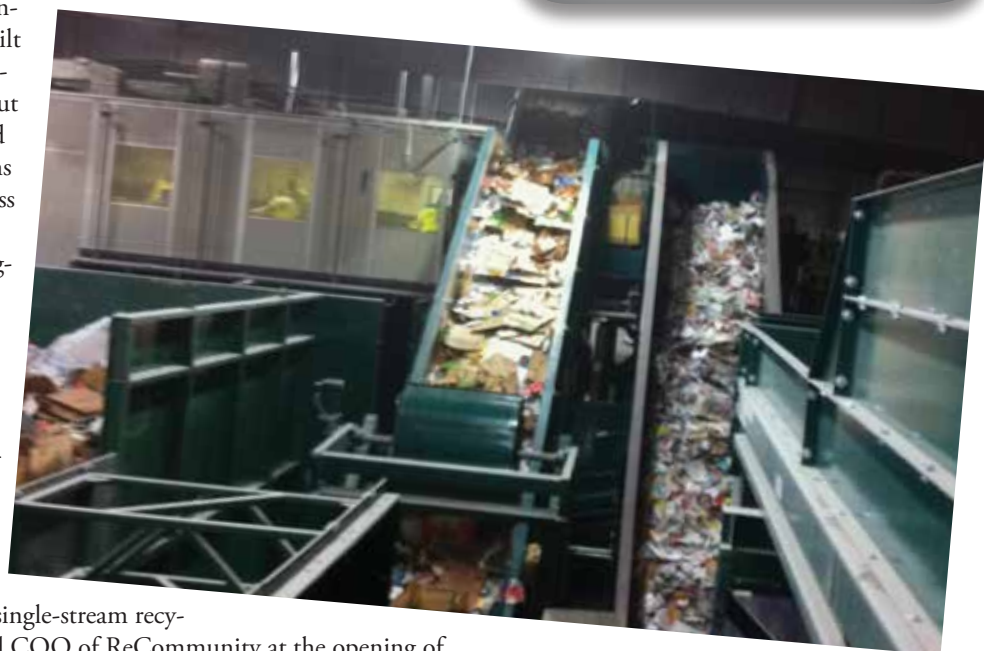
residential and commercial single-stream materials from the seven member communities of the RRRASOC: Farmington, Farmington Hills, Novi, South Lyon, Southfield, Walled Lake and Wixom, serving over 52,000 households in all.

The facility was retrofitted with a 25-ton-per-hour processing system designed and built by Bulk Handling Systems, managing single-stream collected materials with a mix of about 60 percent fiber and 40 percent commingled materials. The MRF can process 90,000 tons of material per year and is expected to process 50,000 tons of material in 2012.

The ReCommunity MRF reports its biggest issue is the dreaded plastic bag and the plant recovers in excess of 95 percent of all inbound recyclables.

Since the initial opening of the facility almost two decades ago, the MRF has processed 760,000 tons of recyclable materials. ReCommunity has operated the facility since 2008, one of 36 facilities the company operates in 13 states.

"We are pleased to bring the Recovery Revolution to Metro Detroit with this new single-stream recycling facility," said Sean Duffy, president and COO of ReCommunity at the opening of the facility. "With the upgrade of the facility in Southfield, we will create more econom-



Technical Specifications*

ReCommunity Detroit / RRRASOC Materials Recovery Facility

Location:

Southfield, Michigan

Start-up date:

December 15, 2011

Number of processing lines:

Three

Throughput:

25 tons per hour/
300 tons per day

Tons of material processed in 2012 (estimated):

50,000 tons

Residue rate:

7 percent

ic development opportunities in Michigan”

At start-up last December, there were 13 employees, a number that has now grown to 75 employees working two shifts, five days a week.

*Know of a North American MRF that you feel *Resource Recycling* readers should know about? If so, e-mail your recommendation, with hi-resolution pictures, to dylan@resource-recycling.com, and your facility may just be highlighted in a future “MRF of the Month” column.

