

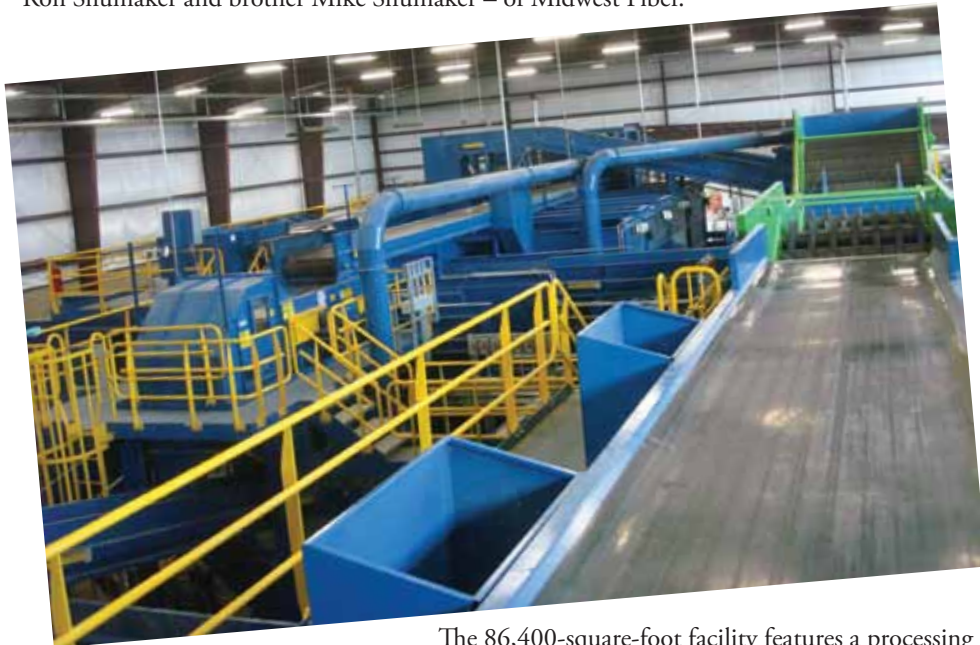
MRF of the Month

Midwest Fiber Recycling

Located in the central Illinois city of Normal – home of Illinois State University and adjacent to Bloomington – Midwest Fiber Recycling's brand-new materials recovery facility (MRF) was built to be a "single-stream recycling hub" for the area, serving more than 14 communities within 100 miles.

Operating in the area for over two decades, Midwest Fiber has two other facilities, in addition to the new plant in Normal, with one in Peoria and another in Decatur.

According to the company, it is the first automated mass production plant built in Central Illinois with the capabilities to process single-stream material. "The plant was constructed to integrate with our existing commercial/industrial grade plant which focuses on printers waste, ONP, OCC and office paper," says Todd Shumaker, co-owner – along with father Ron Shumaker and brother Mike Shumaker – of Midwest Fiber.



The 86,400-square-foot facility features a processing system designed, manufactured and installed by Bulk Handling Systems, supplemented by a Harris two-ram baler and a Bollegraaf baler in the paper plant.

The MRF is being fed from curbside and commercial programs from a number of surrounding communities, the largest being from Decatur, Morton and Peoria. The majority of commercial recycling is being still collected multi-stream, though the trend is moving towards single-stream commercial collection.

The plant is currently processing approximately 1,400 tons per month, with a 15 ton per hour capacity or around 105 tons per day. "We anticipate to process 24,000 tons in 2012," said Shumaker. The facility's mix is 60-percent fiber, with the balance being made up of aluminum, plastic, glass, and tin.

The plant is currently producing a residue rate of 7.5 percent, with the biggest contamination issue being faced at the facility is the dreaded shredded paper in glass.

The Midwest Fiber Recycling's Normal MRF has 20 employees total and is currently running one eight-hour shift, five days per week (Monday-Friday), with plans to add another within 2-3 years.

*Know of a North American MRF that you feel *Resource Recycling* readers should know about? If so, e-mail your recommendation, with high-resolution pictures, to dylan@resource-recycling.com, and your facility may just be highlighted in a future "MRF of the Month" column.



Technical Specifications*

Midwest Fiber Recycling

Location:

Normal, Illinois

Start-up date:

August 1, 2011

Number of processing lines:

One

Throughput:

Approximately 105 tons per day

Tons of material processed in 2012 (anticipated):

Approximately 24,000 tons

Residue rate:

7.5 percent

2007-2008 Materials Processing and Recycling in the United States: Yearbook and Directory

5th Edition — Print or CD-ROM

The 1,300 page Yearbook is the only comprehensive guide to Materials Recovery Facilities (MRFs) in the United States, providing information on 583 operating, planned and shut projects. A nationally recognized resource, it provides a strategic analysis of the post-consumer recycling industry and a database of U.S. Material Recovery Facilities. It is an invaluable reference tool for solid waste decision makers, planners, consultants, and organizations interested in the present and future of recycling.

Governmental Advisory Associates, Inc.

203.226.3238 • 203.226.3239 (fax) • gaa@governmentaladvisory.com • www.governmentaladvisory.com

GAA, Inc.